

Murrk Ngubitj Yarram Yaluk

former Bellarine Basin, Wallington

Masterplan

November 2023

Acknowledgement of Country

We recognise Aboriginal and Torres Strait Islander peoples as the First Peoples of this nation. We acknowledge the Traditional Custodians of the land on which we live and work, and of the water on which we rely. We pay our respects to their Elders past and present.

We value the continuing cultures and contributions of Aboriginal and Torres Strait Islander peoples to our community and their ongoing connection to the land and water over many thousands of years.

Murrk Ngubitj Yarram Yaluk is located on Wadawurrung Country. Barwon Water is grateful for the ongoing guidance from Wadawurrung Traditional Owners in Caring for Country at this unique site.

*Murrk Ngubitj Yarram
Yaluk will be a unique
and inclusive community
place, where people can
celebrate, respect and
enjoy culture, nature and
recreation.*



Principles

We have developed a set of draft principles to bring the vision to life.

- Accessible, safe and inclusive community place
- Connecting people to nature
- Protecting and restoring biodiversity
- Wadawurrung storytelling and spiritual connection
- Caring for and connecting to country
- Balanced, diverse and compatible experiences
- Connecting to the broader Bellarine
- Engaging community along the journey
- Sustainable design and management

Objectives

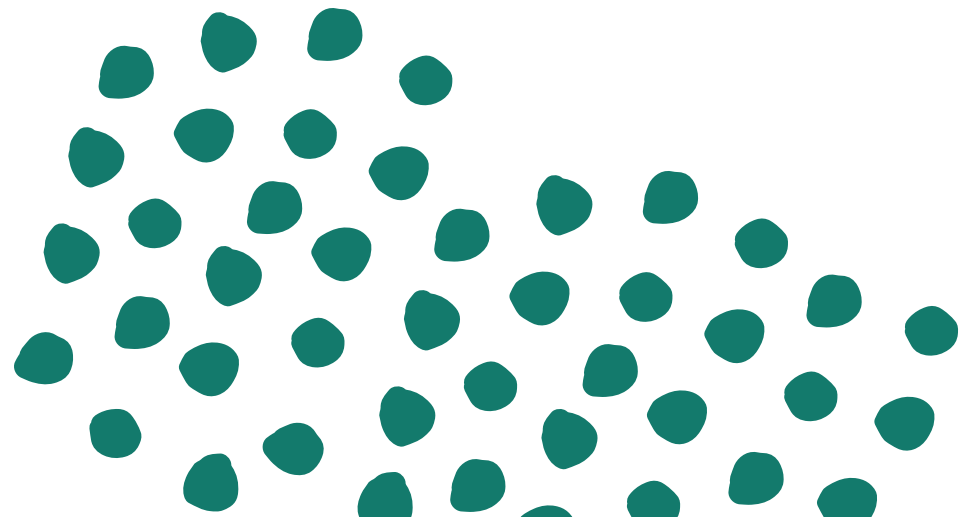
We have developed a series of objectives to guide our decision making around any potential activities for the site.

Objective 1: Nature – Protect and enhance the unique features, habitats, ecosystems and biodiversity

Objective 2: Culture – Recognise the layers of human use and contact with the landscape, and the intangible connection of the Wadawurrung people

Objective 3: Community – The community is involved in guiding the future of the place and ultimately connects in a range of safe and compatible recreational and nature-based experiences

Objective 4: Sustainability – Well planned, ecologically balanced community place that can be maintained into the future



BALANCE VALUES

connection - protection
views - immersion
information - discovery

BIG CIRCUIT - LITTLE LOOPS

Walking trails provide access for all with short varied experience close to the entry, and longer wandering options across the site.

A range of trails expose expansive views, highlight tiny detail underfoot, weave through forests and meander across the open basin.

LANDSCAPE MASTERPLAN

Reconnecting Yarram Creek - Regenerating a Landscape

Revealing the Past - Continuing the Story

Connecting Community - Caring for the Environment

Recognising Wadawurrung culture, understanding what is here and what we are trying to evoke - A landscape layered with stories.

Acknowledging and sharing stories and values.

Tread lightly, take time, listen to Country, listen to community.

Experience a healing landscape slowly regenerating over time.

ACTIVITY ZONES

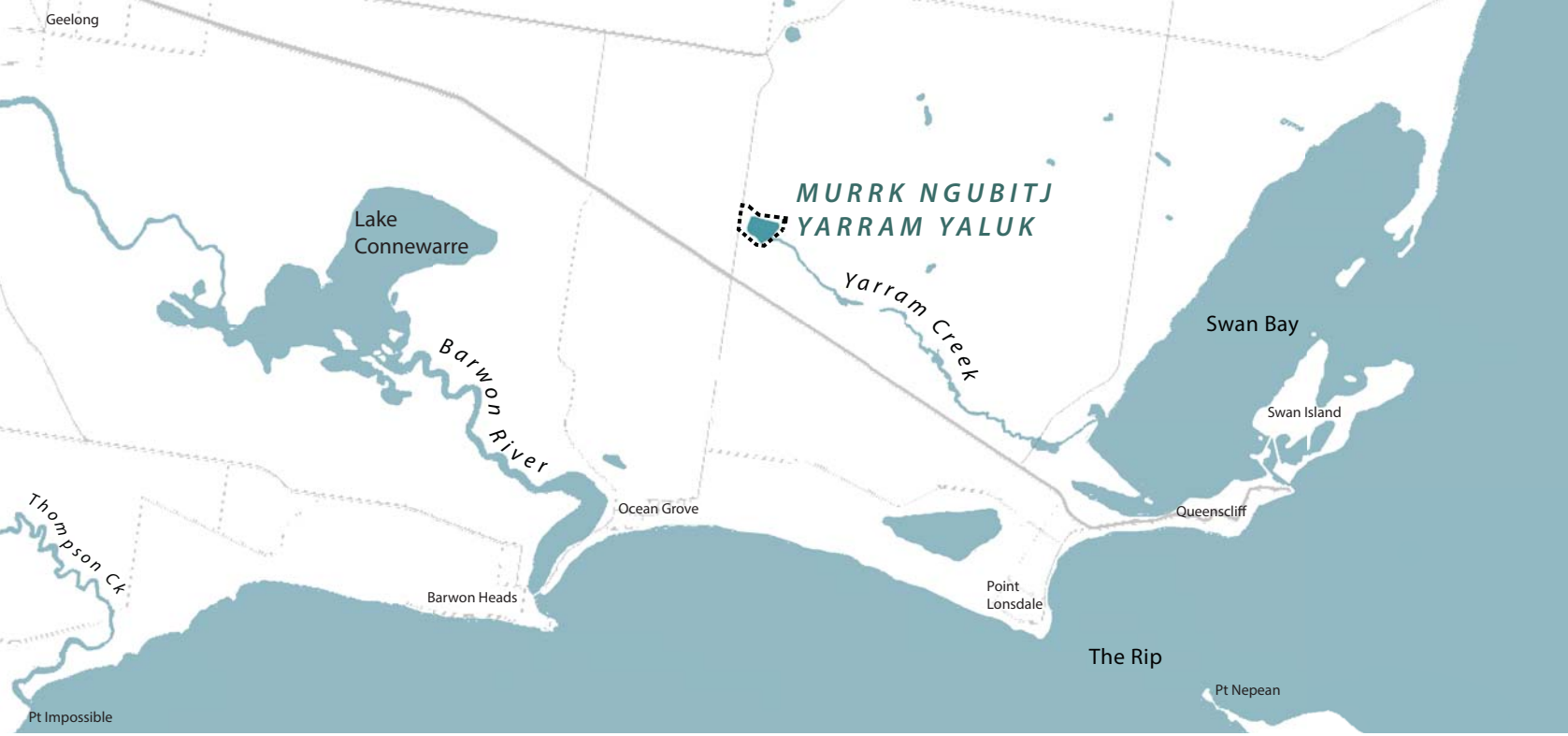
- Activity Centre
- Recreational Bush Regeneration
- Quiet Space Observation
- Conservation Bush Regeneration
- Conservation Protection

LEGEND

- Wetland
- Earth Bund from past storage basin
- Screen Planting
- Walking Trail Big Circuit
- Walking Trail Little Loops
- Walking Trail Service Access Track
- Future Trail Subject to planning and vegetation works
- Closed Nesting Season
- Navigation Points Provide directional and site information. Ecological and Cultural information opportunities
- Lookouts Lookout points chart the course of the creek, articulating the water story. Places to stop connect with the wetland environment.
- Ponding Access
- Gathering Spaces community, events, education, picnicking, big and small.
- Education Centre
- Public Toilet
- Community Entry
- Works Entry
- Bike Access

LANDSCAPE MASTERPLAN MURRK NGUBITJ YARRAM YALUK

.....head waters of continuously flowing river



.....a water story connecting across the landscape



Stories and site information embedded across the site.



Royal Park Nature Play, City of Melb.



Connewarre Reserve- Inla



Detail underfoot invites you to look down and tread lightly



Malarprimenaden, Sweden, Land Architekt AB



Aminge-Ullna Forest Park, Sweden - Topia LA



Remnant Grasree stumps across the basin provide habitat for emerging species, resilient in the continuing story of the landscape. An emblem that can be expressed across the site.



C-LAB, Taiwan - MOTIF



Harpley Discovery Trail, Werribee - GbLA



Bird Hide - a simple structure sits quietly in the landscape



Bird Blind, Portland USA, Maya Lin LA



Naval Cemetery, Brooklyn US - Nelson Byrd Woltz LA



Bird Hide Walk - Narawntapu National Park, Tasmania - photo: Natalie Mendham



East Point Bird Sanctuary, Toronto - Branch Plant - photo: Steven Evans



Structures emmerge into the site as vegetation establishes.



STAGE 1

1-5 years

LEGEND

- Grassy Woodland
- Mod. Grassy Woodland
- Planted Vegetation
- Pine Plantation
- Sedge Wetland
- Mulched Pine
- Basin
- Screen Planting
- Walking Trail Big Circuit
- Walking Trail Little Loops
- Walking Trail Service Track
- Navigation Points
- Lookouts
- Ponding Access
- Gathering Spaces
- Public Toilet
- Community Entry
- Works Entry
- Bike Access



STAGE 2

5-10+ years

LEGEND

- Grassy Woodland
- Mod. Grassy Woodland
- Bush Regeneration
- Sedge Wetland
- Ponds
- Basin
- Earth Bund
- Walking Trail Big Circuit
- Walking Trail Little Loops
- Walking Trail Service Track
- Future Trail Subject to planning and vegetation works
- Closed Nesting Season
- Navigation Points
- Lookouts
- Ponding Access
- Gathering Spaces
- Education Centre
- Public Toilet
- Community Entry
- Works Entry
- Bike Access

LANDSCAPE MASTERPLAN MURRK NGUBITJ YARRAM YALUK

.....head waters of continuously flowing river

**How do I pronounce
Murrk Ngubitj Yarram Yaluk?**

Murrk Ngubitj Yarram Yaluk,
means 'headwaters of
continuous flowing river' in
Wadawurrung language.
We say it like this: *Mirk Newb-
itch Yeah-rem Yell-uk*

To learn more about
Murrk Ngubitj Yarram Yaluk,
please visit
**[www.yoursay.barwonwater.vic.
gov.au/bellarine-basin](http://www.yoursay.barwonwater.vic.gov.au/bellarine-basin)**
or scan the QR code

